

# OPERATION MANUAL

## TEMPERATURE. HUMIDITY MONITOR / ON-LINE LOGGER

Monitor  
AMT208



On-line  
Logger  
AMT207

# INTRODUCTION

Thank you for purchasing AMTAST's Wall mount/desktop Temperature, Humidity monitor /online logger. It is used to measure air temperature and relative humidity with visible or audible alarms.

## FEATURES

- 1) Super large LCD simultaneously display of Temp., Relative humidity, Calendar (M/D) and Time (Clock)
- 2) Alarm threshold is selectable.(LEDs)
- 3) AMT207 features on-line logging up to 64,000 points via PC setting up(Sample rate selection only).


## MATERIAL SUPPLIED

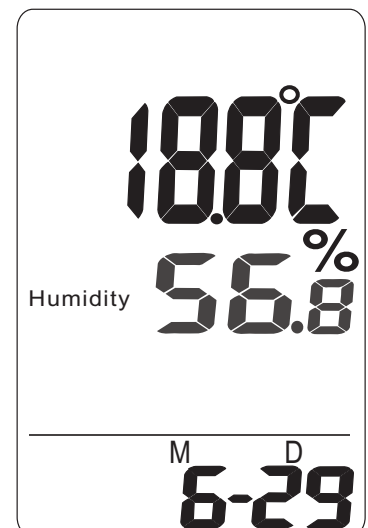
- 1) Meter
  - 2) Operation manual
  - 3) White box
  - 4) Batteries
  - 5) USB cable(AMT207 only)
- Optional: Adaptor(9V+10%,>=0.5A).Plug size 3.5Ø

## POWER SUPPLY

The meter is powered by either an AC adaptor (9V/0.5 A output)(AMT207 only) or AAA batteries 4 pieces.

## LCD DISPLAY

- 1)Air Temp.: Ambient Temperature
- 2)MH : Month / Hour
- 3)DM: Date / Minute
- 4)Bell : The upper bell shows for Temp.alarm has been set, the lower bell shows for RH alarm has been set.



# KEYPAD (MAIN FUNCTION)

- 1) MODE : MAX.MIN. display.
- 2) TRH.M. : Change value down
- 3) SEL./R : Change value up
- 4) UNIT : Select Temp. unit
- 5) POWER : Power on and power off



## OPERATION

### **POWER ON/OFF**

Plug with adaptor or batteries, LCD shows current, RH & Temperature, Date and Time. Press POWER key 3 Second to turn off the meter.

#### **Note:**

- (1) Reset time again whenever you turn on the meter.
- (2) Please use properly power source, input voltage: 100~240VAC, 50-60H  
Output voltage: DC 7.5~9.0V  
Output current: 0.5A, otherwise the meter will be damaged.

## SETTING DATE & TIME

The meter interchangly shows current date and time on the 3rd layer of display, and each cycle is 6 seconds.

The time default is 24-hours format.

Current date and time setting

**MODE+POWER**-->Enter the date/time mode

**SEL/R**--> Number goes up.

**TRH/M**--> Number goes down.

**MODE**-->Edit Month/date or Hour/Minute.

**UNIT**-->Select edit Month or date, Hour or Minute.

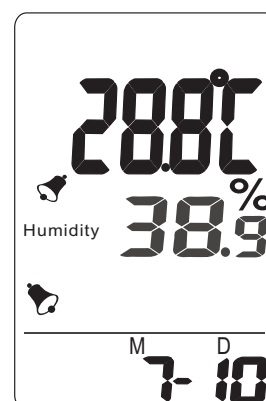
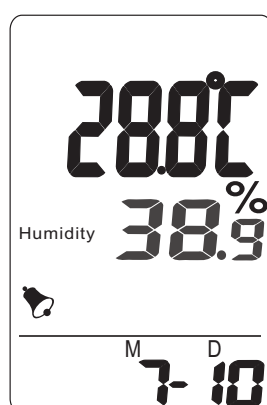
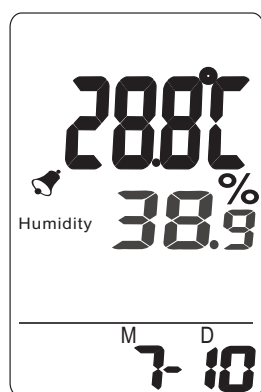
After set up press **MODE+POWER** to save and exit.

# ALARM SETTING

Temp./RH alarm ON/OFF:

In normal measurement, Press **MODE+UNIT** buttons , bell will appear circularly from Temp. alarm on→RH alarm on→Temp. &RH alarms on→Temp. & RH alarm off. Meantime, the RED LED will flash if the data exceeding or lower the setting data.

Temp. alarm on → RH alarm on → Temp.&RH alarm on



a) Temperature Hi/Lo alarm setting.

**SEL/R+POWER**→Enter Temp. alarm setting

**MODE**→ Select edit HI or LO alarm.

**UNIT**→Change digit.

**SEL/R**→Number goes up.

**TRH/M**→ Number goes down.

After set up **SEL/R+POWER** to save and exit setting.

b) Relative humidity HI/LO alarm setting.

**TRH/M+POWER**→ Enter RH alarm setting.

**MODE**→ Select edit HI or LO alarm.

**UNIT**→ Change digit.

**SEL/R**→ Number goes up.

**TRH/M**→ Number goes down.

After set up **TRH/M+POWER** to save and exit setting.

## TEMPERATURE UNIT(°C or °F)

Press **UNIT** button to toggle the temperature unit (°C or °F) .

## MAXIMUM/MINIMUM

Press **MODE** button to appear MAX/MIN.

### **Note:**

a) **MAXIMUM. MINIMUM:**

The unit automatically records maximum reading and minimum reading after powered on.

b) **RESET MAX/MIN:**

Power off the meter to reset MAX and MIN reading.

## TAKING MEASUREMENT

The meter starts the measurements when powered on and updates reading every 2 sec. Response time is 2 Sec. for RH.

If the operation environment changes (ex. From high to low temp.), it takes approx. 30 minutes for RH into stable measurement.

## RECORDING MEASUREMENT (AMT207 only)

While recording, the green LED light is flashing. If you have set up Hi, Lo alarm value, the red LED will be flashing while detecting the value which exceeds the threshold.

Logger status shows at the bottom of the screen.

Enter setting part only if you want to set up.

**NOTE:** Always connect meter with PC before turn on the software. PC needs time to search meter's COM port. If software doesn't record automatically, please exit software and turn on again.

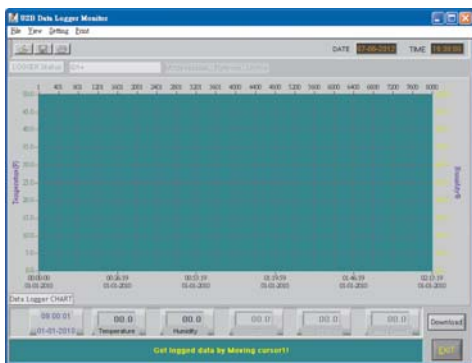
# DATALOGGING FUNCTION (AMT207 Only)

If you want record Temp.RH, plug with supplied USB cable as below to do the on-line logging function



**NOTE:** Ensure to set up date and time first  
Plug mini USB cable onto logger unit, and the male USB plug onto computer, follow the instruction manual to install datalogger software.

The main screen shows :



On-line logging screen

## A Install logger driver for Windows

**PL2303\_Prolific\_DriverInstaller\_v110.exe** driver is for Windows operation system



## B Install the logger software for Windows



# SPECIFICATIONS

<b>Spec./ Model no.</b>	AMT208	AMT207
<b>Visable LED alarm</b>	YES	YES
<b>Logger mode</b>	N/A	Online logging
<b>Temp.range</b>	-20~50°C	-20~50°C
<b>Accuracy</b>	±1.0C	±1.0C
<b>RH % range</b>	2~90%RH	2~90%RH
<b>Accuracy</b>	±5%(at 25°C),	±5%(at 25°C)
<b>Memory capacity</b>	N/A	64000 online

## CE CERTIFICATE

The product complies with EMC directive 2004/108/EC

Technical standard:

Emission

EN 61326-1:2006 Class B

EN 55011:2009/A1:2010 Group 1 Class B

Immunity

EN 61326-1:2006

EN 61000-4-2:2009

EN 61000-4-3:2006/A2:2010

# WARRANTY

This instrument is warranted for one years from the date of purchase (6 months limited warranty applies to cables). A Return Authorization letter must be issued before returning for any reason. This warranty does not apply to defects resulting from action of the user such as misuse, abuse, alteration neglect, improper wiring, improper maintenance or repair, or unauthorized modification, damage resulting from leaking batteries, operation outside of specification.

Amtast USA Inc  
438 Skyline Dr. E Lakeland Fl. USA

**Distributor**